

CHART
TRACK EASYNAV

An aerial photograph of a vast blue sea with several large cargo ships scattered across the horizon. The ships are viewed from above, showing their long hulls and masts. The water is a deep, clear blue, and the sky is a lighter blue, creating a serene maritime scene.

Voyage Planning
Made EASY



A to B
Plan: Plan_15/09/2017 (Planning phase)

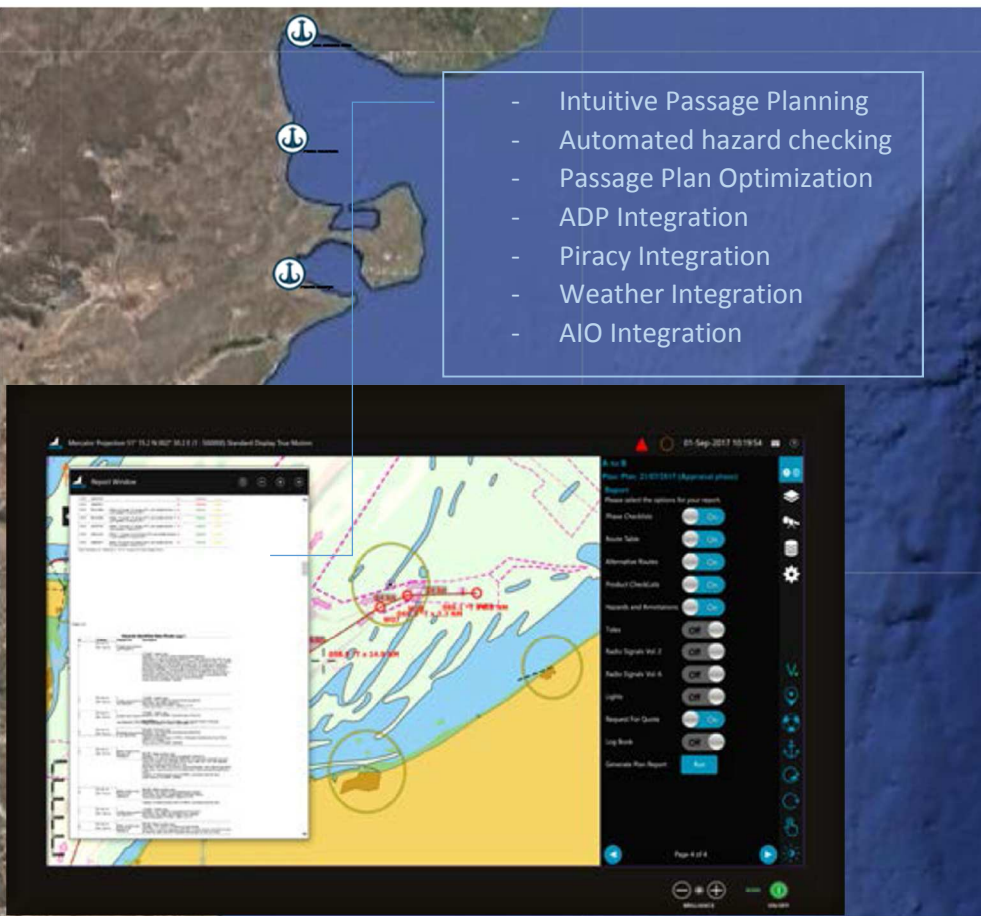
Phase Checklist
These checklists are taken from Annex 25 Guidelines for Voyage Planning- IMO resolution A.893(21).

Description	
Check the plotting of the intended track of the voyage or passage on appropriate scale charts	<input type="checkbox"/>
Check safe speed, taking into account the proximity of other vessels, the state of visibility, the state of the sea, the state of the sky, the state of the sound signals and the state of the vessel's equipment	<input type="checkbox"/>
Check course alteration points, taking into account the vessel's turning circle at the planned speed and any expected effect of the alteration	<input type="checkbox"/>
Check the method and frequency of position fixing, including primary and secondary options, and the indication of the method used	<input type="checkbox"/>
Check use of ships' routing and reporting systems and vessel traffic services	<input type="checkbox"/>
Check considerations relating to the protection of the marine environment.	<input type="checkbox"/>
Check contingency plans for alternative action to place the vessel in deep water or proceed to a port of refuge or safe haven	<input type="checkbox"/>
Check the details of the voyage or passage plan should be clearly marked and recorded, as appropriate, on charts and in a voyage plan	<input type="checkbox"/>

All planning phase checks

Approved By

A Full Feature Voyage Planner



A to B

Plan: Plan_25/10/2017 (Monitoring phase)

Phase Checklist

These checklists are taken from Annex 25 Guidelines for Voyage Planning- IMO resolution A.893(21).

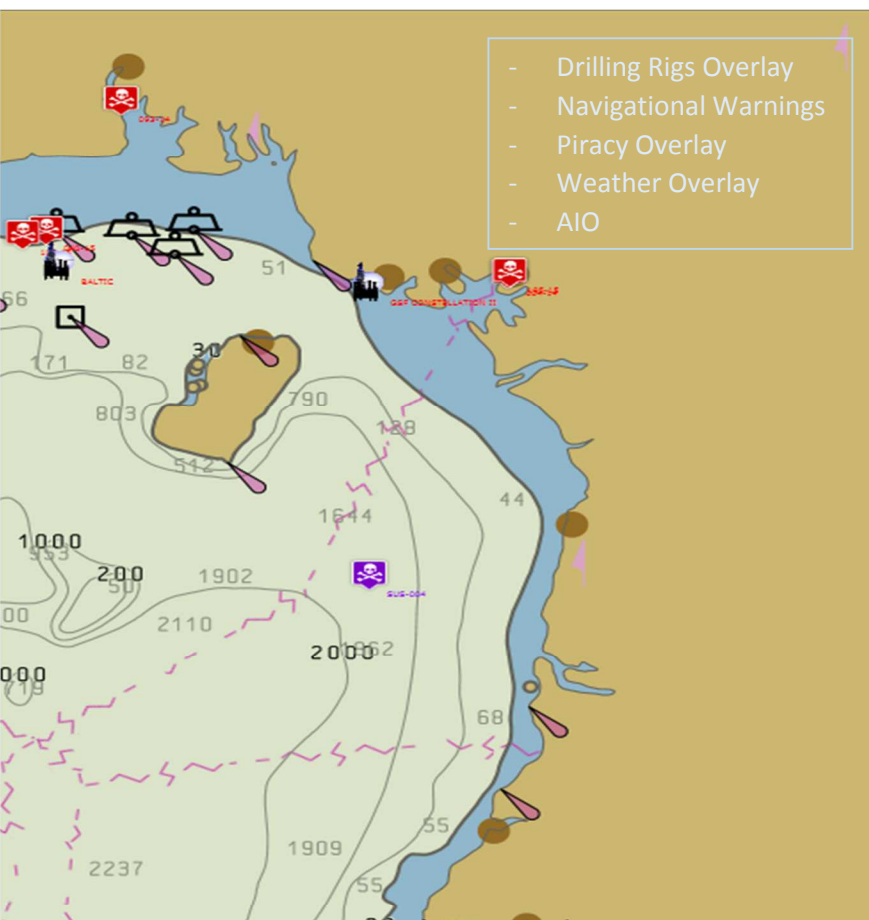
Description	Done
Check the plotting of the intended route or track of the voyage or passage on appropriate scale charts: the true direction	✓
Check safe speed, having regard to the proximity of navigational hazards along the intended route or track, the maneuvering	✓
Check necessary speed alterations en route, e.g., where there may be limitations because of night passage, tidal restrictions, or	✓
Check minimum clearance required under the keel in critical areas with restricted water depth.	✓
Check positions where a change in machinery status is required.	✓
Check course alteration points, taking into account the vessel's turning circle at the planned speed and any expected effect of	✓
Check the method and frequency of position fixing, including primary and secondary options, and the indication of	✓
Check use of ships' routing and reporting systems and vessel traffic services	✓

Chart Track EASYNAV has been designed to allow mariners to plan routes with ease, which ensure the safety of the vessel, efficient navigation and the protection of the marine environment.

The software allows Digital ENC updates to be received, along with Piracy, AIO and weather updates, on the back of bridge which can be transferred to the ECDIS.

Simple function keys and an advanced graphical design ensures an intuitive and user friendly interface.

The user interface has been developed for full touch screen compatibility



Data Management

Online Update Options

- ENC cell data All
- AVCS On
- PRIMAR Off
- NOAA Off
- Drilling Rig Warnin Off
- Navigation Warnin On
- Piracy On
- Weather On
- Get Updates

Online Content Options

- Satellite Imagery Off

The intelligent data management system in EASYNAV allows the user to get ENC data and updates via either removable media (CD, DVD, USB) or the internet, if a connection is available.

Bandwidth usage can be managed by requesting online updates for the current route, a selection of ENC's, or the entire library if so desired.



Install and update your ENC's

A decorative blue wavy line graphic that curves across the bottom of the black text area.

CHART TRACK EASYNAV



Since 1999, Chart Track has been successfully assisting Mariners to sail safely and efficiently.

The new Chart Track EASYNAV now allows Mariners to dynamically plan voyages and optimize routes considering a large number of overlaying factors such as Piracy, Weather and tidal information, Navigational Warnings and so much more.

CHART TRACK
YOUR SAFETY IS OUR CONCERN

For more information or to arrange a trial, please contact your chart agent

www.chartrack.com